

ネットワークという巨大な生命を育む。次世代の情報セキュリティへ

情報セキュリティ大学院大学

3rd Japan & US Computer Crime & Security Survey

Katsuya Uchida

Associate Professor
Institute of Information Security
uchidak@gol.com

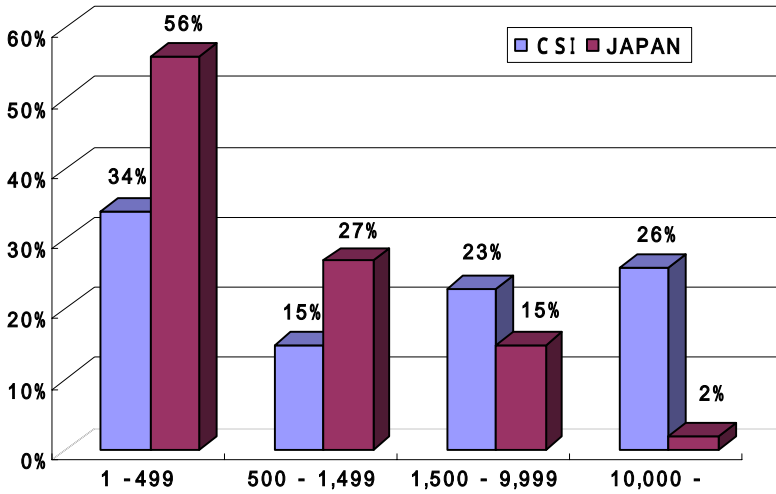


INSTITUTE of INFORMATION SECURITY

Graduate School of Information Security

Intentionally blank

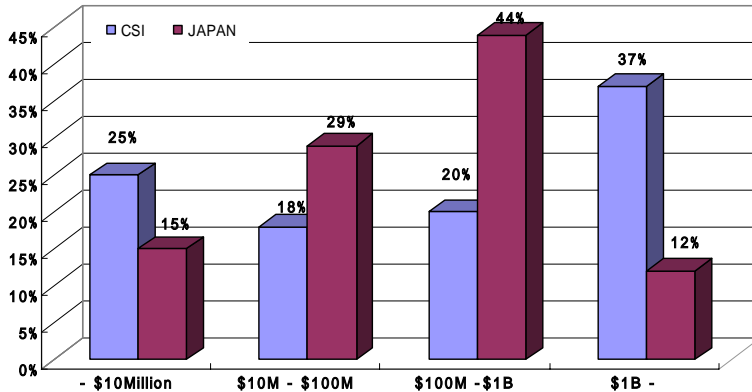
Respondents by Number of Employees



Respondents: CSI= 699 Japan= 1,002

Katusya Uchida, Associate Professor, Institute of Information Security

Respondents by Revenue



Respondents: CSI= 549 Japan=898

Katusya Uchida, Associate Professor, Institute of Information Security

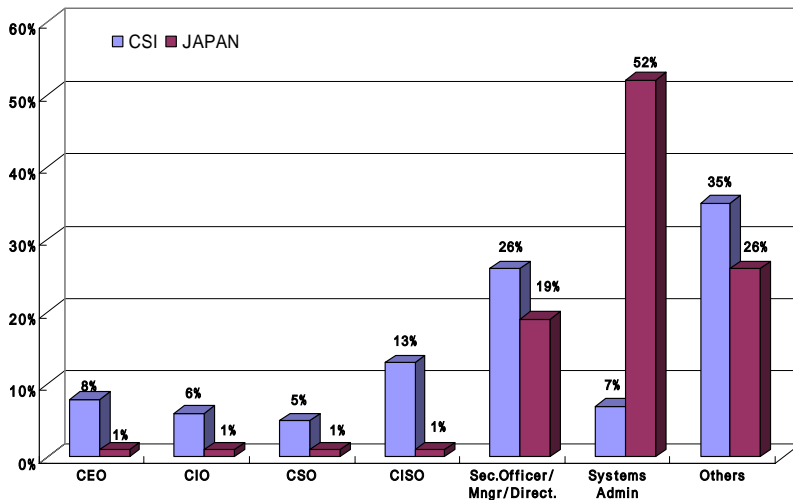
Respondents by Industry Sector

CSI		JAPAN	
Financial	17%	Manufacturing	34%
High-tech	15%	Retail	14%
Manufacturing	9%	Educational	12%
Federal Government	9%	Construction	8%
Medical	7%	Telecommunication	7%
Educational	6%	Government	5%
State Government	5%	Complex retail	5%
Telecommunication	4%	Transportation	3%
Utilities	4%	Financial	2%
Local Government	2%	Real estate	2%
Transportation	1%	Food / Hotel	1%
Retail	1%	Medical / Welfare	1%
Legal	1%	High-tech	1%
Others	19%	Utilities	0%
		Legal	0%
		Others	6%

Respondents: CSI= 699 Japan= 1,004

Katusya Uchida, Associate Professor, Institute of Information Security

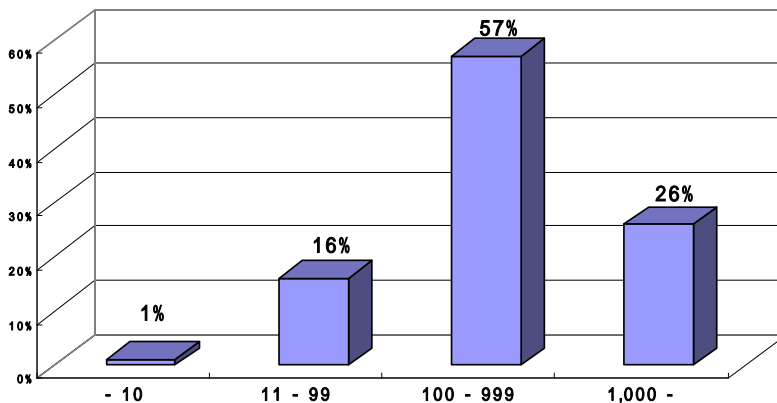
Respondents by Job Description



Respondents: CSI= 690 Japan= 1,004

Katusya Uchida, Associate Professor, Institute of Information Security

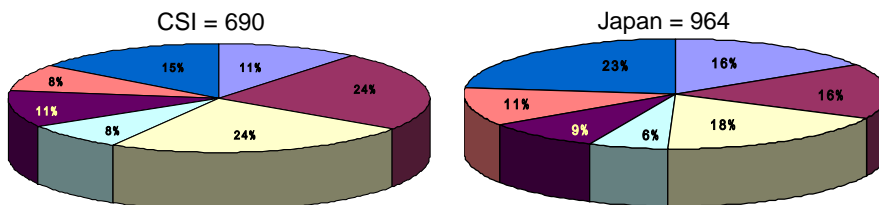
Number of PCs



Respondents: Japan= 1,004

Katusya Uchida, Associate Professor, Institute of Information Security

Percentage of IT Budget Spent on Security

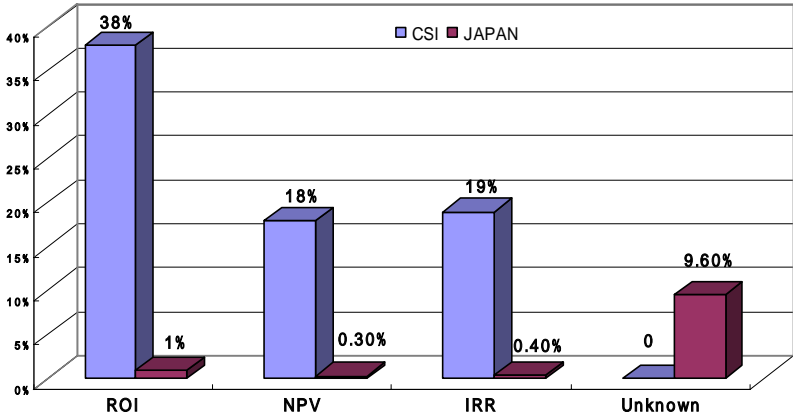


	- 1%	1 - 2%	3 - 5%	6 - 7%	8 - 10%	10% -	Unknown
CSI	11%	24%	24%	8%	11%	8%	15%
Japan	16%	16%	18%	6%	9%	11%	23%

Respondents: CSI= 690 Japan= 1,004

Katusya Uchida, Associate Professor, Institute of Information Security

Percentage of Organizations Using ROI, NPV and IRR Metrics

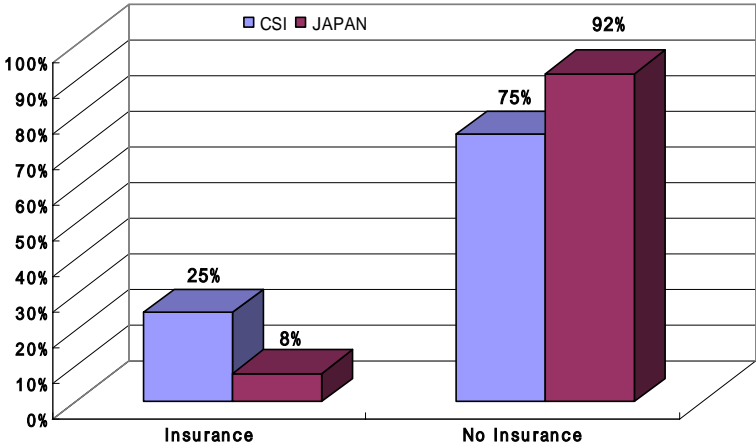


	ROI	NPV	IRR	Unknown	Not Calc.
CSI	228	108	114	-	-
Japan	10	3	4	94	869

Respondents: CSI= 599 Japan= 980

Katusya Uchida, Associate Professor, Institute of Information Security

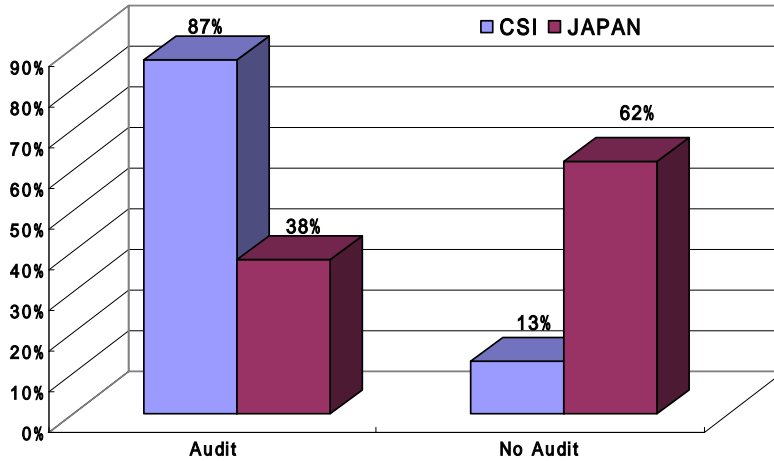
Organizations with External Insurance Against Cybersecurity Risks



Respondents: CSI= 652 Japan= 997

Katusya Uchida, Associate Professor, Institute of Information Security

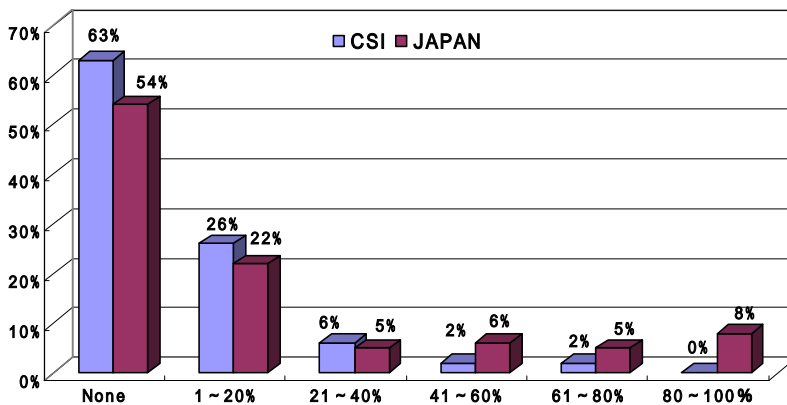
Organizations Conducting Security Audits



Respondents: CSI= 681 Japan= 997

Katusya Uchida, Associate Professor, Institute of Information Security

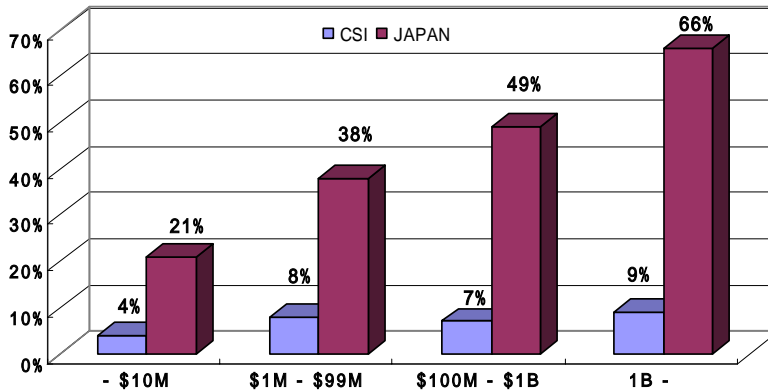
Percentage of Security Function Outsourced



Respondents: CSI= 682 Japan= 923

Katusya Uchida, Associate Professor, Institute of Information Security

Average Percent of Security Outsourced By Organization Revenue



Respondents: CSI= 682 Japan= 923

Katusya Uchida, Associate Professor, Institute of Information Security

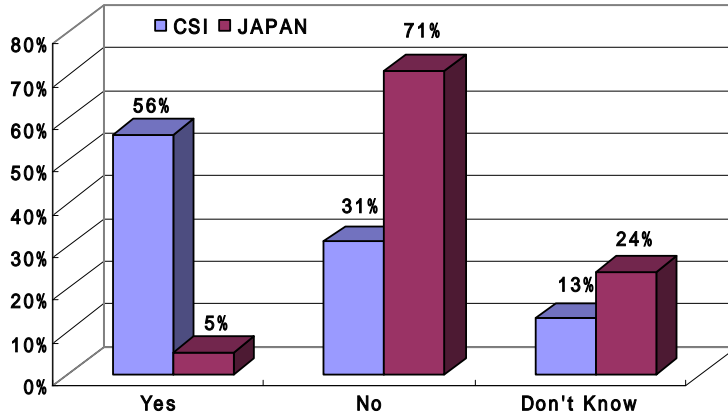
Security Technologies Used

	CSI	JAPAN
Anti-Virus Software	96%	94%
Firewall	97%	91%
Server-based Access Control Lists	70%	75%
Intrusion Detection System : IDS	72%	21%
Encryption for data in transit	68%	32%
Reusable account/login passwords	52%	83%
Intrusion Protection System : IPS	35%	10%
Encryption files	46%	27%
Smart cards/Other one-time password tokens	42%	15%
One time passwords		11%
Public Key Infrastructure	35%	10%
Biometrics	15%	9%
Others	-	5%

Respondents: CSI= 687 Japan= 987

Katusya Uchida, Associate Professor, Institute of Information Security

Unauthorized Use of Computer Systems within the Last 12 Months



Respondents: CSI= 693 Japan= 984

Katusya Uchida, Associate Professor, Institute of Information Security

Types of Attacks or Misuse Detected in the Last 12 Months

	CSI	JAPAN
Virus	32%	67%
Insider Abuse of Net Access	9%	18%
Laptop/Mobile Theft	75%	23%
Unauthorized access to Information	32%	5%
System Penetration	10%	4%
Denial of Service	48%	11%
Theft of Proprietary Information	2%	2%
Sabotage	7%	1%
Telecom Fraud	48%	0%
Abuse of Wireless Network	16%	3%
Misuse of Public Web Application	5%	3%
Others	-	2%
No attack / Misuse	-	23%

Note: Percentages of CSI is calculated from Fig. 14 in 2005 CSI/FBI survey

Respondents: CSI= 700 Japan= 984

Katusya Uchida, Associate Professor, Institute of Information Security

How Many Incidents? From the Outside? From the Inside?

		1 - 5	6 - 10	11 - 30	31 -	Don't know	No incident
CSI	Inside	46%	7%	3%		44%	-
	Outside	47%	10%	8%		35%	-
JAPAN	Inside	31%	3%	1%	1%	12%	52%
	Outside	42%	4%	3%	1%	9%	41%

Respondents: CSI= 453 Japan= 887

Percentage Experiencing Web Site Incidents

	1 - 5	6 - 10	10 -
CSI	2%	3%	95%
JAPAN	73%	1%	6%

Respondents: CSI= 453 Japan= 887

Katusya Uchida, Associate Professor, Institute of Information Security

Dollar Amount Losses by Type

	CSI		JAPAN	
Virus	\$42,787,767	1	\$5,029,847	1
Laptop theft	\$4,107,300	6	\$3,769,338	2
Insider Net abuse	\$6,856,450	5	\$579,987	3
Denial of Service	\$7,310,725	4	\$258,132	4
Theft of proprietary info	\$30,933,000	3	\$230,382	5
Unauthorized access	\$31,233,100	2	\$213,200	6
System penetration	\$841,400	9	\$64,310	7
Financial fraud	\$2,565,000	7	\$50,000	8
Web site defacement	\$115,000	13	\$38,585	9
Telecom fraud	\$242,000	12	\$20,000	10
Sabotage	\$340,600	11	\$12,200	11
Misuse of public Web application	\$2,227,500	8	\$12,100	12
Abuse of wireless network	\$544,700	10	\$11,300	13
Others	-	-	\$1,231,160	-
Total Losses	\$130,104,542		\$11,520,541	
Average of Losses/Respondent	\$ 203,606		\$ 53,335	

Respondents: CSI= 639 Japan= 216

Katusya Uchida, Associate Professor, Institute of Information Security

Actions Taken After Computer Intrusion(s)

	CSI	JAPAN
Patched holes	73%	67%
Did not report	37%	16%
Reported to law enforcement	20%	8%
Reported to legal counsel	12%	2%

Respondents: CSI= 320 Japan= 230

Reason Organization Did Not Report the Intrusion to Law Enforcement

	CSI	JAPAN
Negative publicity would hurt stock/image	43%	94%
Competitors would use to their advantage	33%	6%
Civil remedy seemed best course	16%	0%
Unaware of law enforcement interest	16%	1%

Respondents: CSI= 320 Japan= 230